

MUB 042 499E4-A2** MULTIBOX

Артикул **38090**

Версия: Straight airflow

Тип документа: **Технический паспорт**

Дата создания: **2016-03-02**

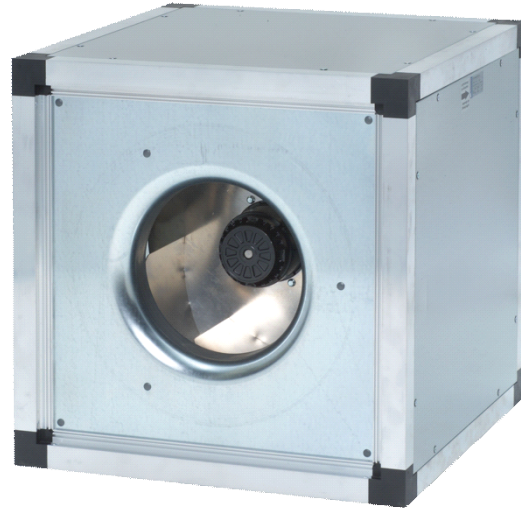
Создано с помощью: **Systemair Онлайн Каталог**

Описание

- Speed-controllable
- Modular system
- Integral thermal contacts
- Low sound level
- Flexible airflow direction due to removable panels
- Installation in any mounting position
- Maintenance-free and reliable

The MUB fans size 499 have impellers with backward curved blades, manufactured from aluminium. The MUB 499 is equipped with external rotor motors, fully speed controllable. The three phase motors are D/Y connected for two speed operation. Motor protection is done by thermal contacts, which have to be connected to an external motor protection device. The casing consists of a corrosion-resistant aluminium frame with fibreglass reinforced plastic corners of PA6; highly shock-resistant. The double skin panels are manufactured from galvanised steel with 20 mm mineral wool insulation. To avoid condensation the profile is provided with a separate chamber to fix screws. The Multibox fans are delivered for straight through airflow but can easily be rebuilt due to removable panels. This allows flexible ventilation solutions. The MUB can also be used as extract- or supply air unit in air handling units. Installation in any mounting position is possible.

MUB with additional modules (filters, heaters etc.) are available as air handling units "K025, K042 or K062" on request!



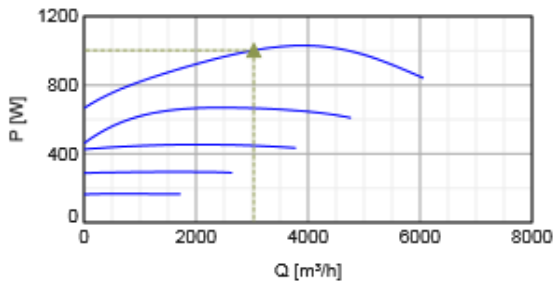
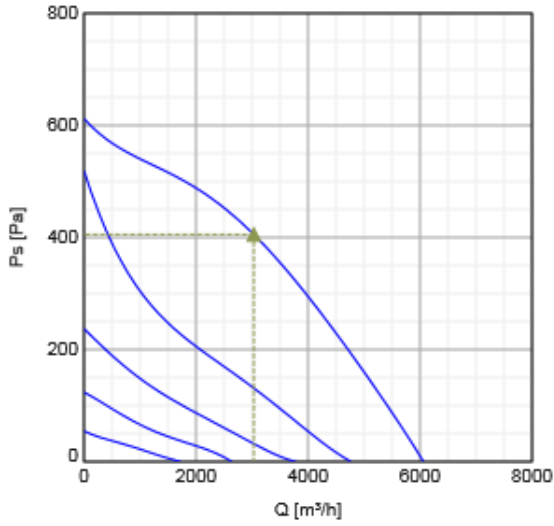
Note! Motors marked with E (e.g. E4-A2) is 1-phased

Технические данные

Номинальные параметры		
Напряжение	230	В
Частота	50	Гц
Фазность	1	~
Входная мощность (P1)	1031	Вт
Ток	4,78	А
Макс. расход воздуха	3899	м³/ч
Частота вращения	1267	1/мин
Емкость конденсатора	20	мкФ
Вес	58,5	кг
Температурные параметры		
Максимальная температура перемещаемого воздуха	40	°C
Максимальная температура перемещаемого воздуха при регулировании	40	°C
Акустические параметры		
Уровень звукового давления на расстоянии 1м	48	дБ(А)
Защита / Классификация		
Класс изоляции	F	
Класс защиты двигателя	IP54	IP

Характеристики

Диаграммы



Гидравлические данные

	Рабочая точка						
	Q [м³/ч]	Ps [Па]	P [Вт]	n [1/мин]	I [А]	SFP [кВт/м³/с]	U [В]
Макс. эффективнос	▲ 3031	▲ 405	▲ 1003	1272	4.65	1.19	230

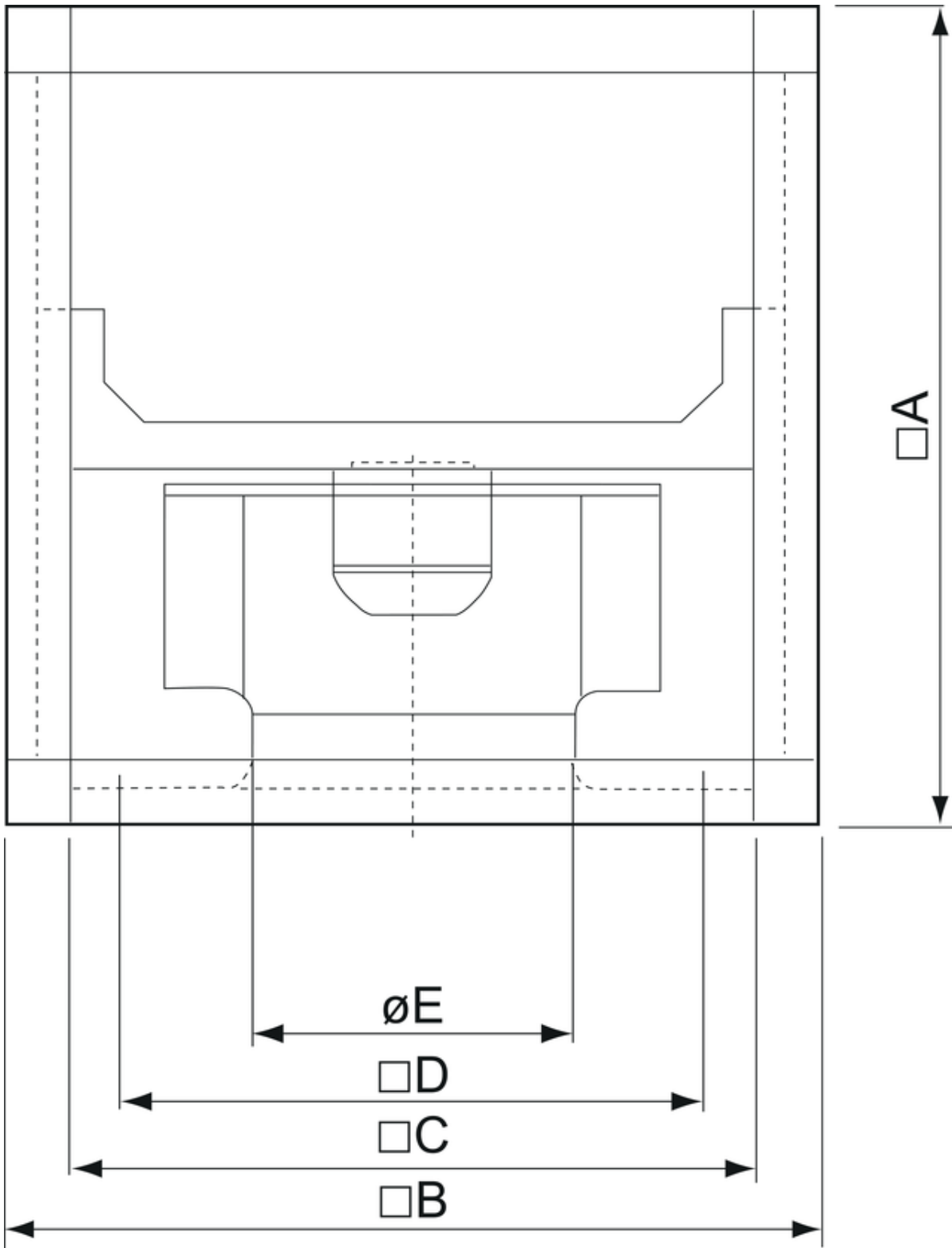
Шумовые характеристики

Mid-frequency band, Hz

	Hz	Tot	63	125	250	500	1k	2k	4k	8k
LwA Inlet	dB(A)	78	65	67	71	73	72	69	64	57
LwA Outlet	dB(A)	80	67	69	73	75	74	71	66	59
LwA Surrounding	dB(A)	55	42	44	48	50	49	46	41	34

Measurement point: $q_v = 0,94$
 m^3/s , $P_s = 428$ Pa

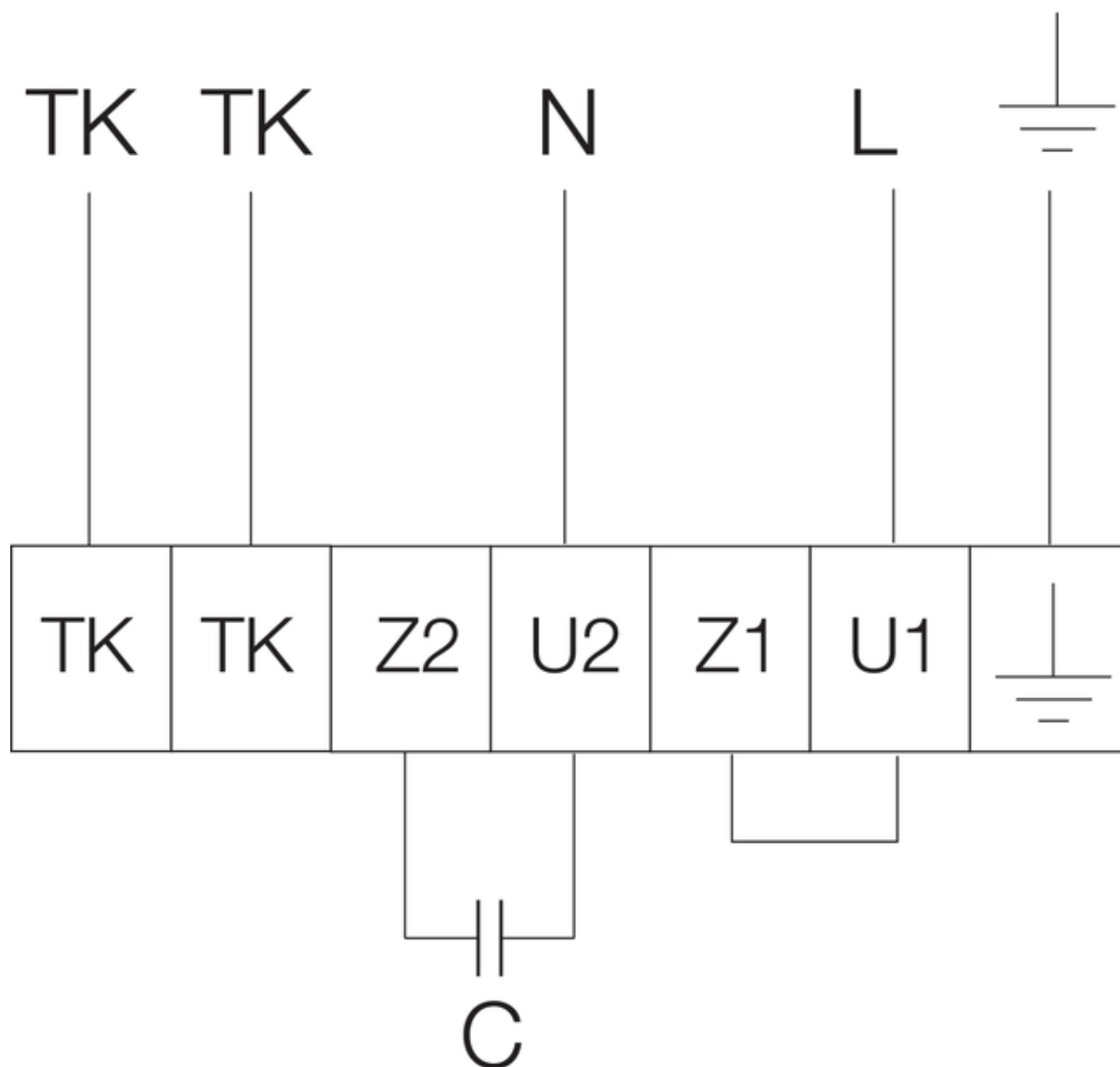
Размеры



	$\square A$	$\square B$	$\square C$	$\square D$	$\varnothing E$
MUB042 499	670	670	590	548	321

Схема подключения

230V 1~



Принадлежности


Электрические принадлежности


REV-5POL/05 ON/OFF (33979)
RTRE 5 Speed control (5010)
S-ET 10 Motor Protection (5154)
REU 5 Speed control (5006)

Принадлежности

CCM outlet MUB042 d400 (311682)
CCM outlet MUB042 d500 (311683)
SRKG 042/588-588 shutter valve (4868)
UGS 042/500 adapter flex. (4357)
FGV 042/586-586 flex. conn. (4605)
SDM Service Door MUB 042 comp. (32572)
WSD 042 (730x730x70) complete (31481)
ASG/F 400-450 inflow box (309949)
CCM inlet MUB042 d400 (311780)
CCM inlet MUB042 d500 (311781)

Документация

 [Operating and maintenance instructions_2010-07.pdf.pdf](#) (488,24kB)

 IMO_MUB_DE-EN-SE-DK-ES-RU_311722.pdf (5,80MB)

 2015-01_EC-declaration of conformity MUB_DE-EN.pdf (105,79kB)

Д.С.П.

 Manufacturers Certificate.pdf (51,93kB)

EPS diagrams

Specification text

Multibox duct fan for easy and direct installation in duct systems. Casing frame construction made of aluminium hollow profiles and plastic corners for highest impact resistance. Double skin galvanised steel panels, thermally and sound insulated with a 20 mm layer of mineral wool, smooth inner sides. Free-running, backward curved circular impeller made of aluminium. Impeller acc. to VDI 2060, balancing quality G 6.3, dynamically balanced in two planes. Voltage controllable external rotor motor (IP44), maintenance-free, the motor is placed inside the air flow for cooling. Integral thermal contacts acc. to EN 60335-2-80 with leads to a motor protection device. Speed-controlled by voltage reduction via transformer. Terminal box fitted on the motor. Multifunctional use, variable outlet direction, can be modified on site. For extract and supply air. Installation in any mounting position. For indoor installation. For outdoor installation with corresponding accessories.